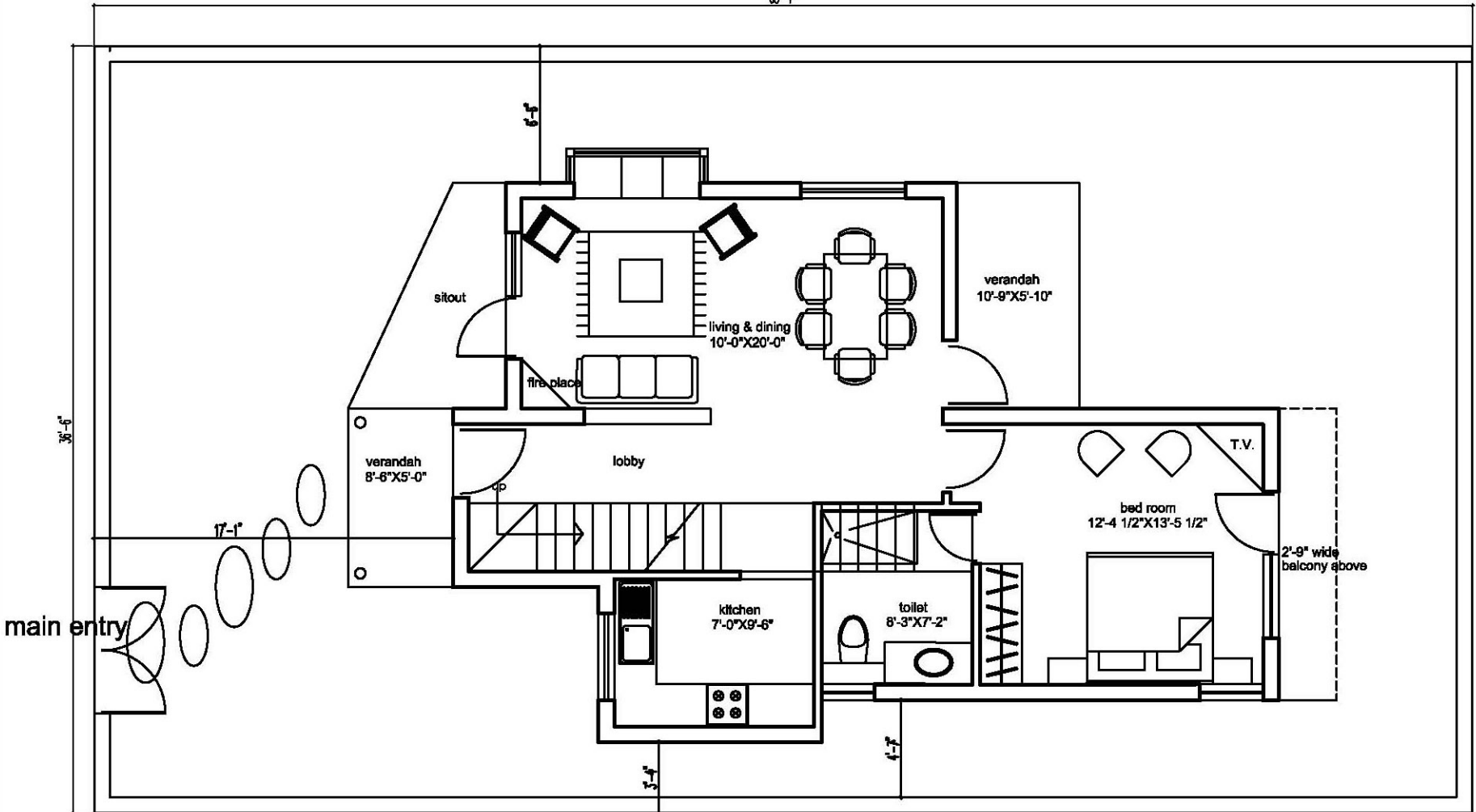


65'-7"

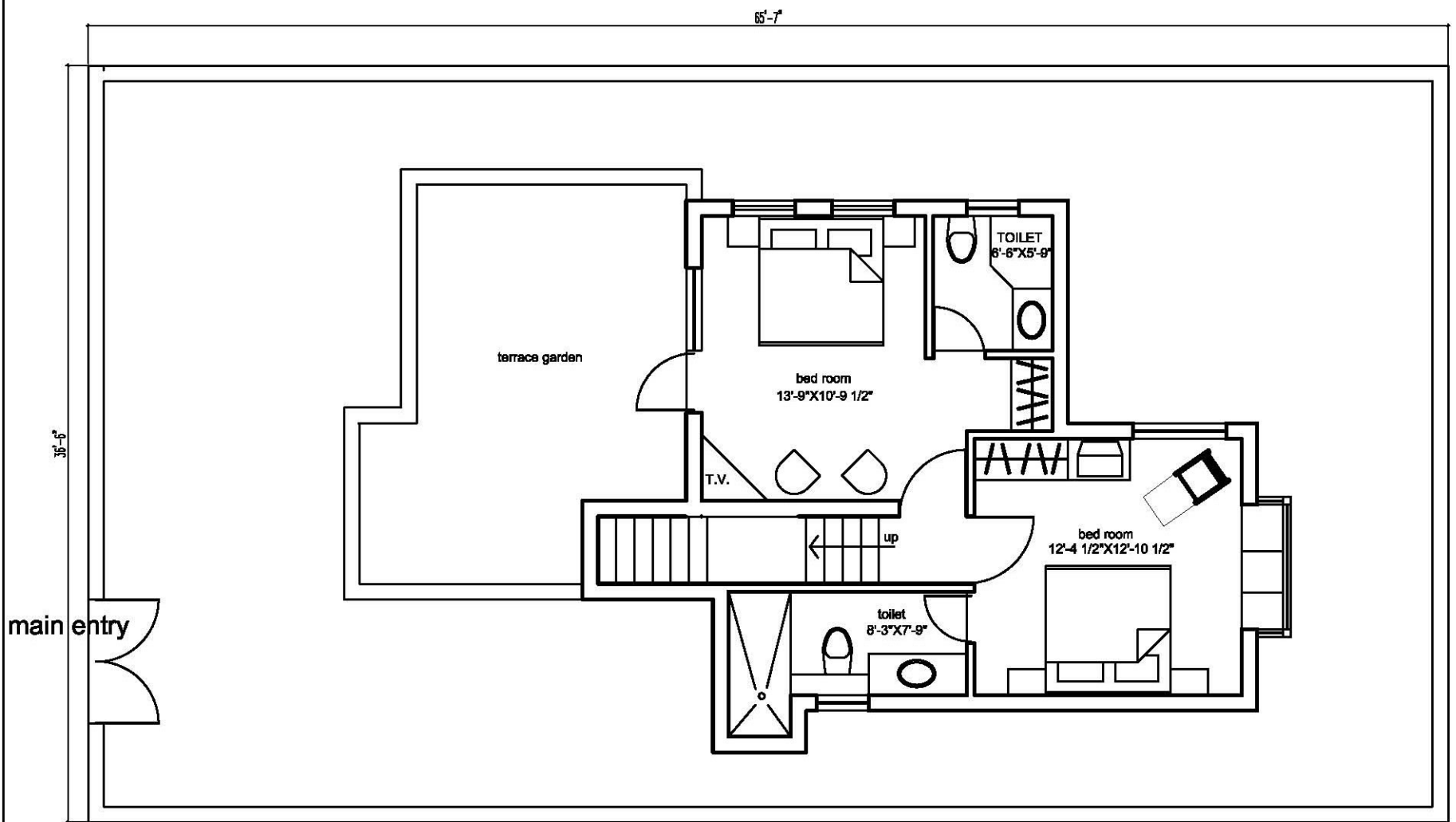


COTTAGE TYPE - A

carpet area - 660 sq.ft
 built-up area - 771 sq.ft
 super built up area - 851 sq.ft

PROJECT TITLE
PROPOSED COTTAGES
 WILDFLOWER HILLS,
 Ramgarh - Mukteshwar Belt (Nanital District)

GROUND FLOOR PLAN - TYPE A



COTTAGE TYPE - A

carpet area - 510 sq.ft
 built-up area - 649 sq.ft
 super built up area - 721 sq.ft

PROJECT TITLE
**PROPOSED COTTAGES
 WILDFLOWER HILLS,
 Ramgarh - Mukteshwar Belt (Nanital District)**

FIRST FLOOR PLAN - TYPE A

59'-5"

3'-4"

31'-6"

landscape garden

main entry

verandah

lobby

fire place

living
10'-7 1/2"X15'-0"

store
3'-3"X3'-6"

up

verandah

bedroom
15'-0"X9'-10"

kitchen
8'-6"X9'-3"

FRIDGE

toilet
9'-0"X5'-0"

dining
10'-3"X9'-3"

landscape garden

COTTAGE TYPE - B

carpet area - 721 sq.ft
built-up area - 843 sq.ft
super built up area - 871 sq.ft

PROJECT TITLE

PROPOSED COTTAGES
WILDFLOWER HILLS,
Ramgarh - Mukteshwar Belt (Nanital District)

GROUND FLOOR PLAN - TYPE B

59'-5"

landscape garden

landscape garden

terrace / roof

31'-6"

main entry

up

bedroom
15'-0"X9'-10"

toilet
9'-0"X4'-7 1/2"

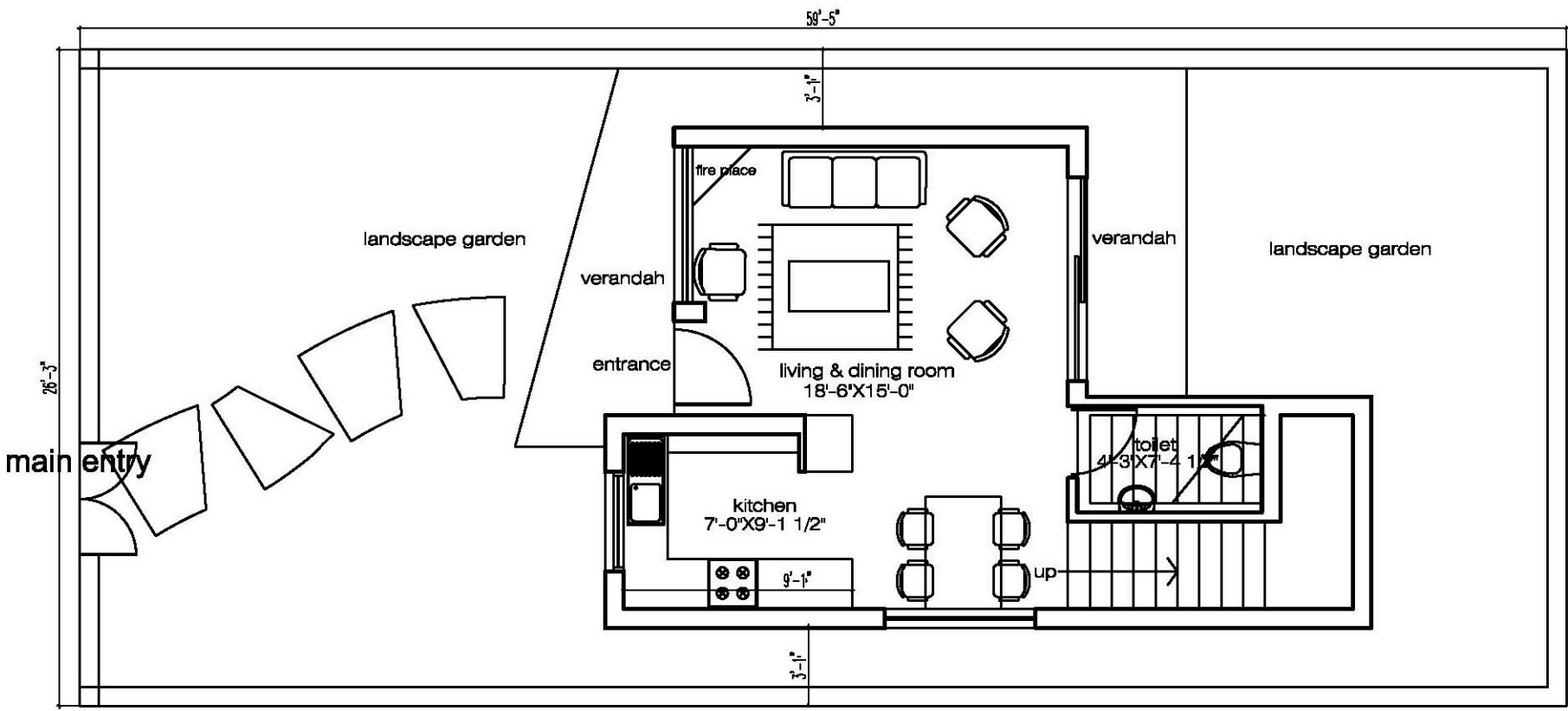
carpet area - 335 sq.ft
built-up area - 408 sq.ft
super built up area - 520 sq.ft

COTTAGE TYPE - B

PROJECT TITLE

PROPOSED COTTAGES
WILDFLOWER HILLS,
Ramgarh - Mukteshwar Belt (Nanital District)

FIRST FLOOR PLAN - TYPE B

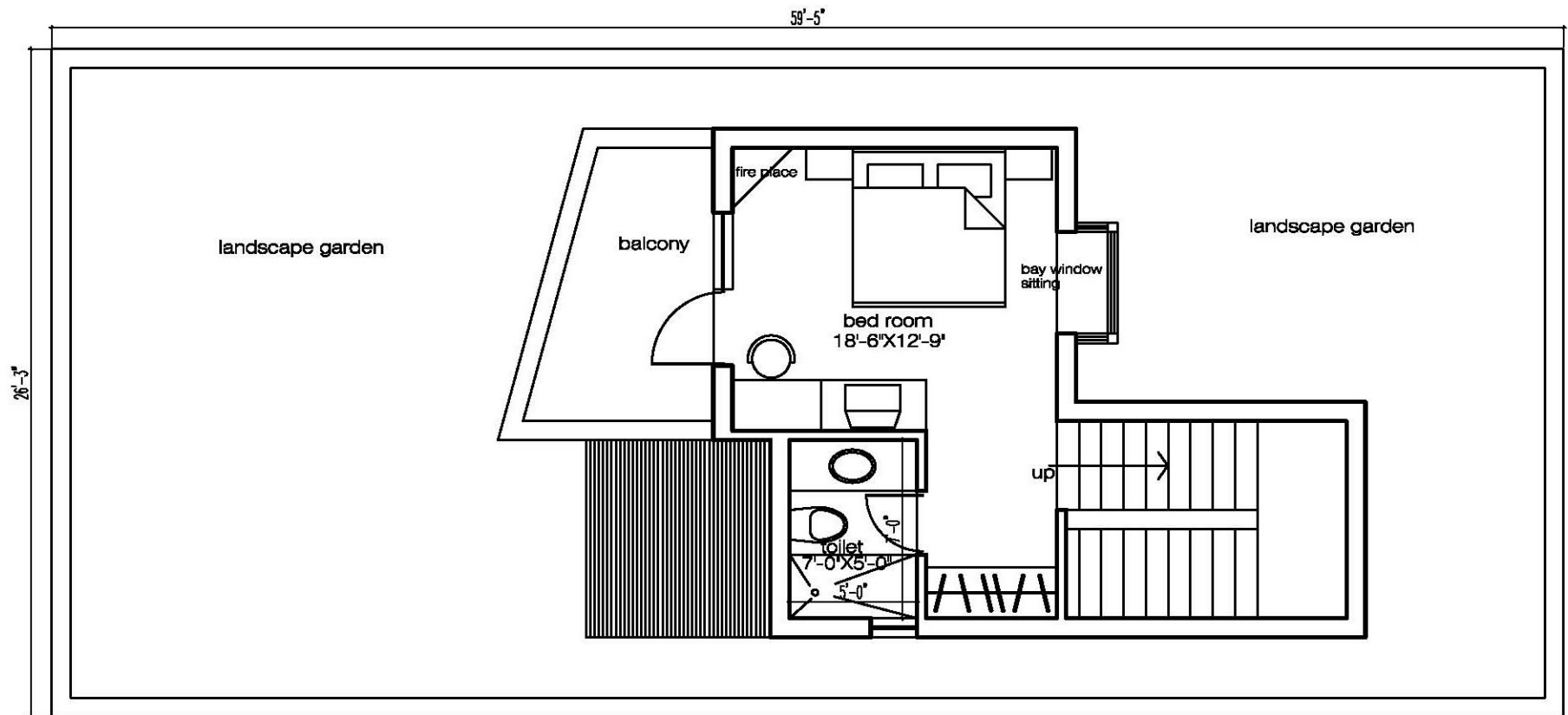


COTTAGE TYPE - C

carpet area - 380 sq.ft
 built-up area - 458 sq.ft
 super built up area - 515 sq.ft

PROJECT TITLE
 PROPOSED COTTAGES
 WILDFLOWER HILLS,
 Ramgarh - Mukteshwar Belt (Nanital District)

GROUND FLOOR PLAN - TYPE C



COTTAGE TYPE - C

carpet area - 302 sq.ft
 built-up area - 380 sq.ft
 super built up area - 477 sq.ft

PROJECT TITLE
 PROPOSED COTTAGES
 WILDFLOWER HILLS,
 Ramgarh - Mukteshwar Belt (Nanital District)

FIRST FLOOR PLAN - TYPE C